

We *are* the river. United we *are* the solution.



VOICES of the HARPETH

Photo Credit: Ken Tucker

SUMMER 2022

TABLE OF CONTENTS

LETTER FROM THE PRESIDENT & CEO

WHAT A YEAR! Every year I say we have been busier than the last, and this year is no exception. As one of the fastest growing states in the nation, it is no wonder that **growth, flooding, and sewer and drinking water infrastructure** are **key focuses** of ours. Did you know that **3.5 million Tennesseans (60%)** get their drinking water from local waterways, over **50% of which do NOT meet water quality standard?**



Fifty years ago this spring, Congress passed the seminal Clean Water Act with the goal for all waters across the U.S. to be “fishable and swimmable” by 1983, and for the complete elimination of all pollution into America’s navigable waters by 1985. While there have been big strides across the country, we are far from the goal. Recent state reports to the EPA highlight that at least **50% of 1.4 million miles of rivers and streams studied across the country are polluted with high bacteria loads, excessive algal growth, and low oxygen levels in waterways overloaded with nitrogen and phosphorus, as well as suffocated with too much sediment from erosion.**

Harpeth Conservancy is leading efforts in Tennessee to drive the science, build consensus, and implement solutions on these core water quality issues with our science, policy, and legal expertise. Tennesseans are learning about “atmospheric rivers” – the phenomenon driven by climatic changes that is bringing more frequent and intense storms to the region – literally water particles forming a river in the air that will fall in optimum conditions.

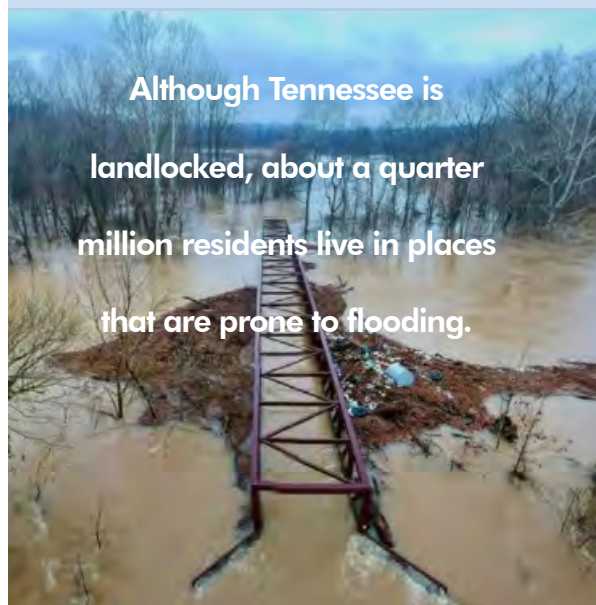
Middle Tennessee, with Nashville at the center, is the country’s most at-risk region for inland flooding. The record-breaking catastrophic flood in rural Waverly, TN was the latest wake-up call signaling that we need updated tools in rapidly developing urban and rural areas to protect property owners from flooding. Flooding also brings direct pollution from sewer overflows – in the millions of gallons of untreated water from manholes and sewer plants – and from large agricultural confined animal feed lots that have little regulatory oversight.

We advocate for the right to have equitable access to clean water, educate all on why waterway protection is essential and how to implement these efforts in communities. We bring a large network of industry professionals from engineers, attorneys, and scientists, to work with people of all ages, races, and socio-economic backgrounds. We need your support to expand our capacity to work with communities across Tennessee so we can all be effective voices and stewards of our waterways.

Together we are all making a difference! **THANK YOU!**
Dorie Bolze

Land Use and Rural Land Protection ...	2 & 3
Clean Water Protection	4
Clean Water Leadership	5
Science and Restoration	6 & 7
Restoration, Protection and Volunteers ..	8 & 9
Map of our Work in 2021	10 & 11
Outreach and Education	12
How YOU Can Help	13
About Us.....	14 & 15
Funding Our Work with Your Help ..	16 & 17
Thank YOU for Your Generosity	18 & 19

Although Tennessee is
landlocked, about a quarter
million residents live in places
that are prone to flooding.



BROWNLAND FARM-CASE STUDY IN RISKS OF EXTENSIVE FLOODPLAIN CHANGES

In late April, the Franklin Board of Mayor and Aldermen voted **UNANIMOUSLY** to deny the controversial extensive floodplain alteration proposal for a high-density residential development on Brownland Farm. This proposed dramatic reshaping of 50% or more of the floodplain was solely to maximize development without improving current flood hazards on the roads that would **completely block all the ways in and out of this area!**

Harpeth Conservancy has provided expertise since the beginning on how this proposal did not meet the zoning criteria to protect public safety, nor was it consistent with the city's land use plan to limit disruption of the floodplain. **At least 70% of the proposed development footprint was in the manipulated floodplain.** This plan put **357 residential units in a unique bend in the Harpeth River that is entirely encircled with hazardous floodwaters!**

This proposal illuminated the fact that it is not always appropriate for cities to manipulate floodplains, even when regulations permit them to do so. It displayed how limitations such as the percentage of acreage altered, reduced flood risk, the lay of the land, and flood risk in nearby areas need to be considered. This massive floodplain alteration did nothing to reduce flood risk to nearby residential subdivisions, **including over 500 homes, now in floodplain that were not when approved more than 20 years ago.**

ACTION SUCCESS!



Brownland Farm is a notable horse show farm that has driven economic revenue for over 60 years. Many in the community envision it becoming part of the Franklin and county recreational system to expand opportunities for equestrian uses and other recreational value.



Nearby neighborhood with a floodway channel that was part of the Brownland Farm development proposal.



County navigates shifting weather, flood science

Cole Villena Nashville Tennessee/USA TODAY NETWORK - Tennessee

Flooding last March closed Hillsboro Road at Third Avenue North in Franklin following several inches of rain. Photos by Stephanie Amador, The Tennessean

Harpeth Conservancy's CEO, Dorie Bolze, is in this March 27, 2022 story in *The Tennessean* on the need to update rain storm statistics now and every 5 years to make 100-year floodplain predictions more accurate. If not, new developments will underestimate the amount of water for which to design and will cause increased flood risk.

Flooding is the 2nd highest cause of **weather related** fatalities because people drive into floodwaters. Most motorists will stall or lose control of vehicles, including most SUVs, in just 6 inches of water. 18-24 inches of moving water floats vehicles, including trucks.



Harpeth Conservancy Channel
Tune into the May 2021 Conservation Conversation: Flooding in TN with expert Roger Lindsey, Chair of the TN Association of Floodplain Management. Learn how atmospheric rivers driven by climatic changes are creating more severe flooding and tornadic storms in Tennessee.



LAND USE PLANS ENFORCED

Citizens won an important TN Court of Appeals decision in Nashville in late 2020 that reinforced that **land use plans are not simply guidelines or vision statements** when local laws specifically state that the land use plan be implemented.

The court found that the Nashville Planning Commission failed to consider Nashville's land use plan when approving a residential development in the Whites Creek-Bordeaux community. This case was referenced by the Williamson County Planning Commission in denying a high-density residential subdivision in northern Williamson County along the Harpeth in late 2020. The land use plan was also relevant in the recent unanimous vote by Franklin elected officials denying the Brownland Farm development proposal, which is also on the Harpeth.



HAPPY HOUR IN THE NEIGHBORHOOD

Neighborhood Happy Hour in Northern Williamson County co-hosted by the Bottorffs with the Curreys and Laginesses as co-hosts. The event celebrated the community's successful effort in shaping growth and development. Pictured left to right: John Guider, Steve Harlan, Haylee Wadley Hall, Lisa Blaschke, Tom and Katie Douglas, Chad and LeAnne Bottorff.

COMMUNITIES TAKE ACTION

Harpeth Conservancy provides guidance and expertise

HC works with and advises communities, local government departments, and local officials throughout the greater Nashville region and Middle TN. It takes community involvement to reshape, halt, and find better solutions for controversial development proposals. City and county growth plans are critical documents that are developed with significant community involvement. These plans map out the appropriate use of taxpayer funds for sewer, drinking water, roads, and schools for example. A major role for many of these plans is to direct growth and development to protect rural land, floodplains, important natural places, wildlife, as well as historical, archeological, and other community assets.

Harpeth Conservancy has been involved in shaping numerous land use plans and local zoning, flood plain and stormwater regulations that implement these plans. We have provided our expertise on nearly 100 different proposed developments.

DÉJÀ VU AGAIN: MCCRORY LANE QUARRY VICTORY

Harpeth Conservancy's focus on potential water contamination issues related to the McCrory Lane Quarry, known locally as Hutton Lake, began with our work with Senator Douglas Henry - the father of the State Scenic Rivers Act. The work continued with other state legislators, Metro Council members, geology experts, and community leaders to prevent the property owner's attempt to undermine the Act's prohibition of landfills near the State Scenic Harpeth in 2006. The Act requires landfills to be a minimum of two miles away from the Harpeth; however, the Harpeth River is only 400 feet away and connected to Hutton Lake by ground water. Last year, HC worked with Metro Council and community members to rezone Hutton Lake to better align with the current land use plan and to lower chances of river contamination. This year, HC provided documentation from 2007 that was used to stop a new bill that would have nullified all current zoning protecting the property. HC's historical knowledge and advocacy around this issue and similar zoning issues is instrumental to protecting our rivers.



McCrory Lane Quarry, known as the Hutton Lake

We want to thank our community members who have been engaged in this long running issue and continue to stay involved: Your voice matters! HC will continue to monitor Hutton Lake and we hope this will be the last update on the matter.



CONSERVATION EDUCATION DAY

On March 2nd, HC partnered with Tennessee Conservation Voters, Sierra Club, Tennessee Environmental Council, and Tennessee Interfaith and Light to meet with legislators about water and environmental concerns.



CHEERS AND BEERS AT TAILGATE BREWERY

HC organized an informational gathering to increase engagement, educate the community, introduce legislators, and galvanize the public's involvement in legislation that impacts our rivers. More than 100 concerned citizens in the Bellevue area attended the event co-hosted by Tommye Maddox, James "Boo" Sanders, and Gerard Stranch. Elected officials in attendance included: Council Members Dave Rosenberg, Gloria Hausser, Angie Henderson, Sharon Hurt along with Representative Bo Mitchell, Senator Heidi Campbell, School Board Representative Abigail Tylor, Kingston Springs Vice-Mayor Glenn Remick, and Pegram Vice-Mayor Bob Sanders.

2022 LEGISLATIVE BILLS

It is imperative that we have influence in the state legislature if we are to ensure clean water and protect Tennessee rivers. HC continues to expand our legislative work, but significant resources are needed to adequately monitor and influence the various bills that affect our rivers and clean water. We need more member engagement and support for legislative monitoring.

The removal of local governmental decision-making capabilities was a common theme shared among the many conservation-related bills in 2022. HC actively **opposed** two of these bills: HB 2328/SB 1953, which **disregarded zoning laws when filling quarries** and SB 2077/HB 2246, which removed local decision making in the **siting of energy infrastructure**.

HC **supported** SB 2525/HB 2516 to **establish the Tennessee Flood Resilience and Community Preparedness Task Force**. We are a coalition member along with numerous mayors, small businesses, homeowners, faith leaders, and others across the state focused on efforts to making Tennessee resilient against the frequent flooding.



RECREATIONAL MANAGEMENT

Increased growth in Middle Tennessee has elevated the need for better recreational management and HC's expertise around water withdrawal issues. We continue to lead in these areas and have expanded our work in the past year.

Harpeth Conservancy continues to promote Be River Responsible educational outreach to teach individuals how to protect our rivers while enjoying them! Our longtime work on the Harpeth River Blueway continues to expand allowing safer and more user-friendly public access locations to our rivers. We support recreational management by reviewing, advising, and presenting on the necessary steps needed to handle the impacts of growth on our rivers. HC part-time staff member Jane Polansky, the former Harpeth River State Park Manager and Tennessee Scenic Rivers Administrator, presented HC's recommendations on the best practices to manage "hot spots" on the rivers to the State Advisory Commission tasked with recommending how to improve management of recreational areas. Jane continues to hone her expertise in these areas as the current president of the Southeast Chapter of the River Management Society.



Thank you for supporting our advocacy work across the state.



Volunteers at an Invasive Plant Removal at Gregory Mill Park

HARPETH CONSERVANCY SERVES AS THE FISCAL SPONSOR FOR MANY WATER RELATED GROUPS

Harpeth Conservancy integrated and expanded our relationships with nascent and existing groups under its leadership umbrella. HC is the fiscal sponsor of **Friends of Lick Creek** in Hickman County that is focused on a proposed new sewer plant driven by growth expansion in nearby counties. HC continues to work with and integrate **Richland Creek** programs and **Mill Creek Watershed Association**.

HARPETH CONSERVANCY LEADING STATEWIDE ENVIRONMENTAL EFFORTS

Harpeth Conservancy has been leading and expanding membership of the Tennessee Water Groups (TWG) to facilitate collaborations around clean water policy across Tennessee. Our work has included coordinating public input through the preparation and filing of written and oral comments related to legislation, rule changing, zoning, and clean water policy. HC specifically prepared analysis for TWG on the Cheatham Lake *E. coli* levels (the section on the Cumberland River in Nashville) and on the 2022 TN 303(d) list of impaired waters.

Grace Stranch, our VP & COO, was appointed to the Special Solid Waste and Recycling Commission by the Mayor of Nashville. This expands our ability to push for solutions and recommendations around disposal of Nashville's solid waste.



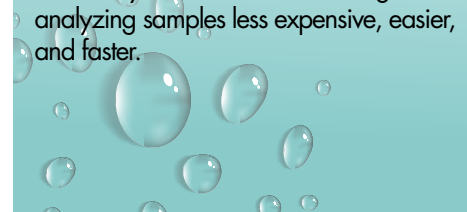
STATE GRANT HELPS PROVIDE RESTORATION PROJECT



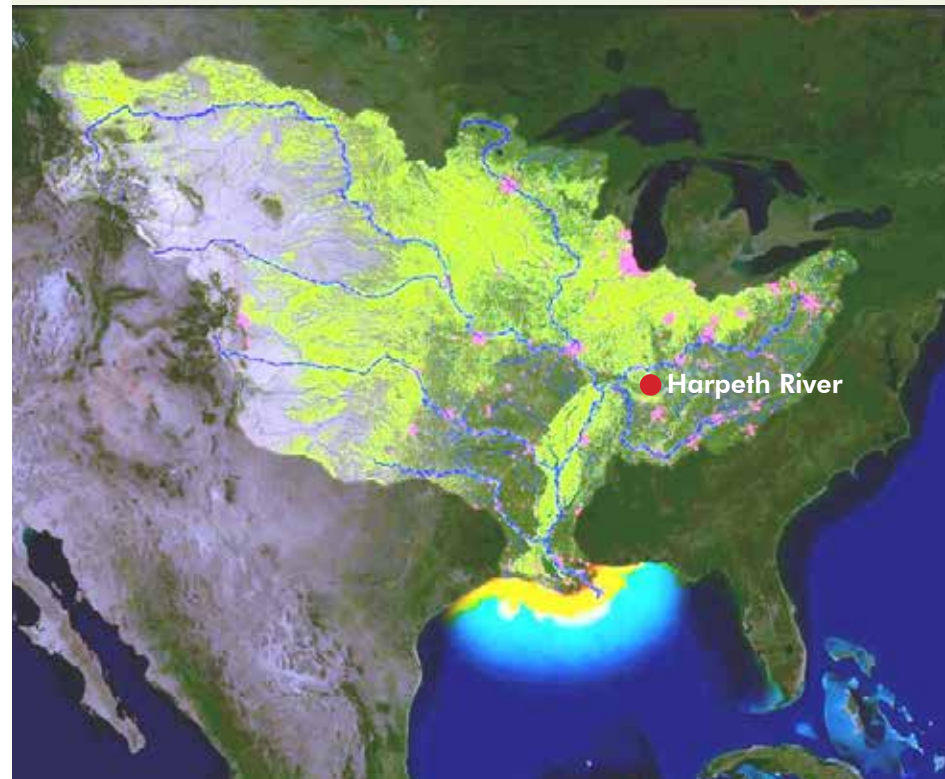
In 2021, HC completed our stormwater restoration project in **Eagleville, TN** along a drainage stream at Ronnie Hill Park. We planted more than **100 native species** and, to help stop erosion, the **site was graded** and supported with **erosion prevention rock**. This is part of our **20-year effort in agricultural stream restoration work in the headwaters** with over **\$1 million in state grants** that have also included agricultural exclusion fencing and alternate water sources. **YOU** can copy these types of projects by creating a water source for your pets and animals other than creeks and rivers. Pick up animal waste. Plant your own rain gardens. **Plant a tree!**

WANT YOUR WATER SAMPLED?

For the third year, HC is collecting water samples throughout the summer from Mill Creek, Richland Creek, the Harpeth River, and more to determine if the water is clean and safe for recreation. Do you want to know what is in your local stream? HC can help coordinate sampling and analysis for a fee, or join our volunteer Citizen Science team and help collect water samples weekly. HC is raising funds (\$15,000) to have our own laboratory that will make collecting and analyzing samples less expensive, easier, and faster.



Our work for clean water matters in Tennessee, but also has a regional and national impact with our waters flowing into our oceans. Runoff pollution from Tennessee's rivers flows into the Mississippi River watershed and results in **5-10% of pollutants flowing into the Gulf of Mexico**. These pollutants result in a **6,334 square mile Dead Zone** where dissolved oxygen is so low that marine wildlife is not able to survive. Polluting rivers in Tennessee ultimately contributes to the Dead Zone causing issues for a variety of industries including tourism, seafood, and recreation.



Tennessee contributes between 5 – 10% of all nutrients flowing into the Gulf of Mexico!

POLLUTION REDUCTION PLAN FOR THE HARPETH RIVER

The State of Tennessee classifies the **Harpeth River as "impaired"** because of the phosphorus, nitrogen, and other pollutants—largely from agriculture and sewage plants—that contribute to hazardous algal blooms and decreased oxygen levels. In order to help offset this classification, HC's Science Director, Dr. Ryan Jackwood is working alongside the **Environmental Protection Agency (EPA)** and **various state and local entities to develop a sophisticated water quality model that will be used to determine how to reduce pollution levels. Among the non-profits in TN, Dr. Jackwood is the only staff scientist with this particular expertise.**

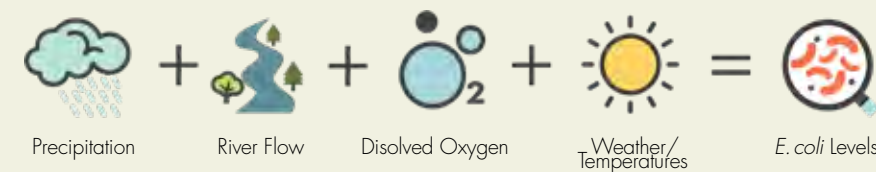
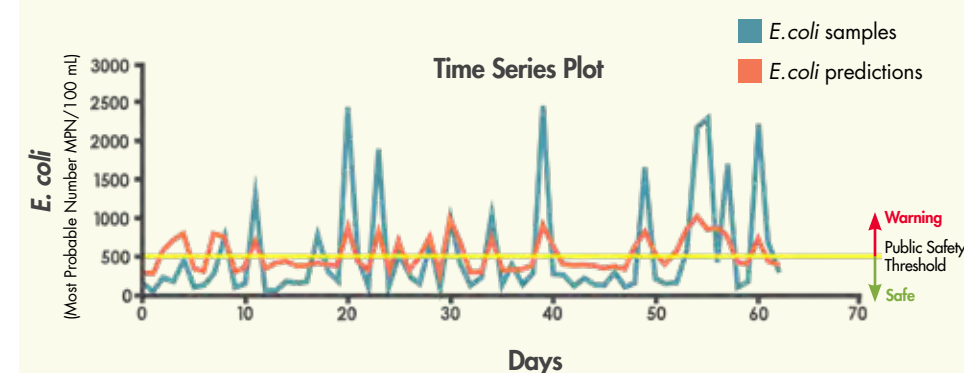
During the fall and winter months, Dr. Jackwood held three internal meetings with the federal and state experts to determine how best to meaningfully reduce nutrient pollution in the Harpeth River. HC and many other concerned stakeholders are working with the Tennessee Department of Environment and Conservation (TDEC) to establish pollution reduction goals for the Harpeth River, and we hope this approach can be replicated for many rivers across Tennessee to protect clean water and our aquatic habitats. As the population of Nashville and other Middle TN cities continue to grow, these efforts will become increasingly important.

WATER SAMPLING & MODELING FOR *E. COLI*

The State of TN performs very little *E. coli* sampling, particularly in our highly recreated rivers, and none of these samplings are combined with a forecast model. This is why we have stepped up to inform the public and monitor the health of our rivers.

E. COLI LEVELS EXCEED MINIMUM STANDARDS FOR SAFE RECREATION AND THREATEN PUBLIC HEALTH

- **WHY?** Bacteria threaten our waterways and pose health risks to swimmers. Waterborne pathogens (bacteria capable of causing disease in humans) are capable of causing Salmonellosis, Legionnaires' disease, dysentery, and other stomach, respiratory, skin, and cranial infections. Bacteria sources may include sewage, urban or agricultural runoff, or industrial waste. When these bacteria flow into our beaches and rivers they can pose serious health risks.
- **WHERE?** In 2021 we sampled **8 locations** – 4 locations in the **Harpeth River**, 2 locations in **Mill Creek**, and 2 locations in **Richland Creek**.
- **HOW?** Over the past two years we have collected **193 samples at 8 locations** with **10 volunteers**. We also recently purchased a turbidimeter, so we now have the capability to measure the "cloudiness" of the water too.
- **FINDINGS:** We discovered that **many locations still exhibit elevated levels of *E. coli*** during critical times throughout the year when many people and their pets are using local waterways for recreational purposes.



PREDICTING *E. COLI* AT RECREATIONAL LOCATIONS IN THE REGION

HOW HC IS KEEPING YOU SAFE



Why real time modeling is a better indicator of river health

We are continuing our efforts to develop a water quality forecast to determine *E. coli* levels in the Harpeth River, Mill Creek, and Richland Creek—a process that takes approximately two years of data collection. Our model will use readily available data and provide real time alerts that identify which locations are "safe" for recreation on any given day. The existing efforts to alert the public of these risks rely on the traditional approach of culturing *E. coli* which requires 18-24 hours to complete. Thus, currently, "do NOT swim" advisories are based on the previous day's measurements and therefore retain greater risk than the predictive models we are developing. Predictive models can utilize various water quality, weather, and environmental parameters that correlate elevated *E. coli* levels with certain environmental conditions (Shown on graph to the left.)



TREE PLANTINGS & INVASIVE REMOVALS

Our volunteers love to connect with nature and gain knowledge and skills they can use to properly select and plant trees, identify and manage invasive privet without the use of herbicides or other less desirable techniques, and maintain a biodiverse and healthy native riparian habitat. These opportunities are possible in part because of our program presenters/partners Brand and Patricia Miller and Paul Fowler. For information on invasives and how to properly remove them on your own, search **Harpeth Conservancy** on **YouTube**.



Tree Planting in Orchard Bend Park in Antioch

RIPARIAN HABITAT IMPROVEMENTS AT LL BURNS PARK

Volunteers cleared privet and other invasive plants from a riparian area about 13,500 sq.ft. (about 1/3 of an acre) in LL Burn Park in Kingdon Springs. Check out BEFORE and AFTER pictures below.



TREE PLANTING & INVASIVE PLANT MANAGEMENT AT WARNER PARK

75 volunteers from Vanderbilt University Service Club and Friends of Warner Parks cleared invasive privet and planted 300 native tree seedlings along 46,000 sq.ft. of the Little Harpeth River in Nashville. That's just over one acre!



WE'VE BEEN BUSY!



2 Tree Plantings
Mill Creek and Warner Parks in Nashville



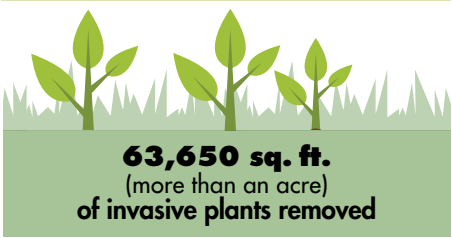
4 Invasive Plant Removals
Warner Parks x2 and Gregory Mill Park in Nashville and LL Burns Park in Kingston Springs



152 volunteers **454 volunteer hours**



475 native trees planted



63,650 sq. ft.
(more than an acre)
of invasive plants removed

THANK YOU TO THE FOLLOWING GROUPS/COMPANIES/ORGANIZATIONS WHO HELPED!

- ▶ Conexión Americas
- ▶ Friends of Mill Creek
- ▶ Friends of Warner Parks
- ▶ Fulbright Scholars
- ▶ HCA Healthcare
- ▶ Montgomery Bell Academy
- ▶ Tennessee Nature Academy
- ▶ Tennessee Wildlife Resources Agency
- ▶ Vanderbilt University Service Club

INVASIVE REMOVAL SPOTLIGHT

FULBRIGHT SCHOLARS SELECT HARPETH CONSERVANCY

The Institute of International Education (IIE) hosted a seminar in Nashville as part of the **Fulbright Foreign Student Program**. The seminar brought together **100 Fulbright students** from across the world to share their cultures, showcase an American city, and encourage public diplomacy. The program required a community service activity. IIE chose Harpeth Conservancy as one of its community service partners. **Twenty international students** from **seventeen countries** joined us and our partners, Friends of Warner Parks, to learn about the Harpeth River ecosystem, flooding, and the history of Warner Parks while removing litter and non-native plants from the banks of the Little Harpeth River. It was a wonderful opportunity to discuss water issues in the U.S. and abroad while sharing our organization's work with a global audience.



VOLUNTEER SPOTLIGHTS



(Left to Right) **Ethan Miller, Nathan Dewitt and Alex Snow**. Ethan coordinated his own river clean-up where he and three friends paddled the Harpeth River from Coley Davis to Newsom's Mill. The trip took about 5.5 hours. They removed about 30 lbs. of trash and reported broken soccer goals and tires.

Trapper and Piper Haskins,

a remarkable father/daughter duo paddled 11.5 miles of the Harpeth River with a Google camera. Soon everyone will be able to see the river from a 360° Google Street View.



10 River Cleanups	88 Volunteers	THANKS TO OUR CLEAN-UP PARTNERS: <ul style="list-style-type: none">▶ AECOM▶ HCA Healthcare▶ Montgomery Bell Academy▶ Tennessee Environmental Council (TEC)▶ Turner Construction Company
216 volunteer hours	4,580 lbs. of trash removed (over 2 tons!)	

THANK YOU TO OUR RESTORATION PROJECT SPONSORS



FEATURED CLEAN-UPS

During our river clean-ups we practice river safety and etiquette. We discuss the importance of riparian buffers, how human trash—including toxins—affect fish, vegetation, and wildlife, and ways people can best protect our Tennessee waterways. (See pages 10 & 11 for locations)



HCA Healthcare volunteers removed about **300 lbs.** of trash along the Harpeth River in Cheatham County. **Turner Construction Company** later floated further downstream and removed an additional **400 lbs.** of trash.



21 Montgomery Bell Academy students removed nearly **100 lbs.** of trash from Kingfisher Creek in Davidson County and earned student service credit hours.



33 volunteers from **AECOM** and partner Harpeth River State Park removed almost **3,000 lbs of legacy trash** in two separate sessions.

MAP OF HARPETH CONSERVANCY WORK IN 2021



-  **Policy Actions** Pages 2, 3 & 4
-  **E. coli Sampling Locations** Page 7
-  **Lessons on the River** Pages 8, 9 & 12
-  **Educational Programs** Pages 12 & 13
-  **Community Events** Page 13
-  **Donor Gatherings** Pages 16 & 17



P.E.N. PALS

For more than 10 years, Harpeth Conservancy has partnered with Warner Parks on the People Exploring Nature Pals (P.E.N. Pals) Program that serves **200 inner-city children annually**. For many children it is literally the first time they put their feet and hands in the river and explore what is in our waterways. Our trained staff help children explore the Little Harpeth River and understand the ecosystem that sustains aquatic life. Our macroinvertebrate program incites curiosity and helps children better understand, appreciate, and respect river ecosystems.



SAVE THE DATE!

4TH ANNUAL FAMILY FUN DAY

June 18th 11am-3pm
Ford's Bend Franklin TN

FREE admission & parking
Many new and returning activities



FAMILY FUN DAY 2021 RECAP

This third annual Family Fun Day was a huge success as more than **50 participants** enjoyed a fun and relaxing day on the river. Activities included kayaking, basic knot tying, fishing lures casting sessions, viewing macroinvertebrates, a scavenger hunt, zip lining, face painting, photo-op with "Harry Otter", cooling off with free sno-cones, meeting members of the **Nashville Predators Energy Team**, and giveaways. Thank you to **Susan and Tim Ford** for hosting us, and the **16 volunteers** who made the event happen, and **Williamson County Medical Center** for providing first aid kits for everyone to take home to be safe on the rivers!

LESSONS ON THE RIVERS SNAPSHOT

Our Lessons on the Rivers are programs and activities designed to actively engage participants in enhancing the river ecosystems of Tennessee through restoration projects, educational in-person events, and on-the-river interaction. Each program is designed to provide a takeaway to encourage citizen action beyond the event. Thank you to our Lessons on the Rivers Partners this year: Bates Nursey, Harpeth Moon Farms, New Hope Academy, Warner Parks, and Harpeth River State Park.

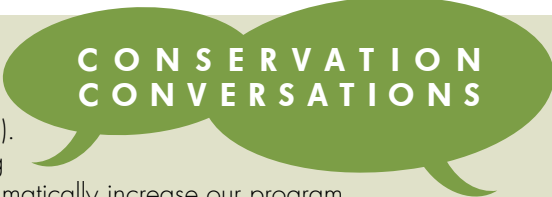
UPCOMING LESSONS ON THE RIVERS 2022/2023*

All of our Lessons on the Rivers are FREE and open to the public. We do request pre-registration, so we know how many people to expect. If you have any suggestions on topics, partners, or other events, please contact a member of our Outreach team.	DATE	TOPIC
	June 18	Family Fun Day
	July 9	What's in your river with TWRA
	August 20	Water Treatment Plant Tour
	September 10	River Clean-up
	October 22	Hike – Mound Bottom
	November 5 or 12	Invasive Plant Removal
	December 3 or 10	Holiday Recycling at REI
	January 14	Invasive Plant Removal
	February 25	Tree Planting

*Events and dates are subject to change. Please check our website for current information.

Special Thanks to our Education and Outreach Sponsors: Barbara J. Mapp Foundation, Colonial Pipeline, Harpeth Painting, Tennessee Valley Authority (TVA), Tennessee Wildlife Resources Agency, Nashville Predators Foundation, and Waste Management

In 2020, we introduced our virtual educational program, Conservation Conversations (CCs). CCs offered online learning during COVID-19 and enabled us to dramatically increase our program offerings and audiences. To date, we have hosted **17 CCs** with more than **500 attendees**. HC partnered with nonprofits, governmental agencies, and academic institutions to discuss a wide range of topics including lawn care maintenance, sewer overflows, flooding, recycling, accessing rivers, and fishing. Look for more CCs as topics arise.



WANT TO GET MORE INVOLVED?

HERE ARE SOME WAYS YOU CAN HELP!

- Suggest topics for our programs
- Tag us, Share, Comment & Ask 5 friends to follow us on our social media channels
- VOTE in local and state elections, as well as in national elections
- Get to know your state legislators on the TN General Assembly website
- Get to know your local elected officials and planning commissioners
- Sign up to help!
 - Advocacy – gracestranch@harpethriver.org
 - Outreach & Communications – frederickgonzalez@harpethriver.org
 - Special Events – hayleehall@harpethriver.org
- Become a neighborhood liaison for HC
- Sign up with Just Glass recycling program (use code: HARPETH)
- Test your soil (\$15/kit that we can provide). Do NOT use fertilizers with phosphorus
- Create a stream bank buffer
- Plant native plants and remove or replace non-native plants
- Only use public river access points
- Lock your load (keep windows up, truck beds secure, etc.) to reduce trash in our waterways
- Do **NOT** blow grass clippings into the streets, culverts, or waterways – Please bag them and/or compost
- Be River Responsible – avoid trespassing, follow TN boating laws, share the river, respect others and wildlife on the river, and WEAR A LIFE JACKET.
- Participate in **River Swing**, our largest annual fundraiser:
 - Be a Sponsor
 - Donate to our Silent Auction
 - Organize a table of 10 (\$2,750 by 9/11 or \$3,000 starting 9/12)
 - Donate items to reduce expenses (lighting, sound equipment, graphic design, photography skills, etc.)
- VOLUNTEER** and attend our events
- Clean up a stream on your own
- Join us for a clean-up or invasive removal
- If you, your organization, or corporation are interested in participating or sponsoring any of our volunteer programs, contact us at frederickgonzalez@harpethriver.org.



COMMUNITY ENGAGEMENT EVENTS

We love connecting with people in our communities and sharing our mission. We participated at events with exposure to more than **100,000 people** over the past year. Some of the events that we have attended the past year include:

- 37th Annual Main Street Festival
- Earth Day Festival
- Fairview Nature Fest
- Franklin Riverfest
- MBA Wellness Fair
- Nashville Lawn & Garden Show
- Nashville Outdoor Recreation Festival & Expo
- REI Brentwood

UPCOMING COMMUNITY EVENTS 2022/2023*

Come see us or help volunteer at one of our upcoming events! Please let us know if there is an event we should attend!

- May 28**
Water Lantern Festival at the Parthenon
- June 8**
Michael W. Smith Clay Shoot Benefit with Rocketown
- October 1**
Music City Head Race Downtown Nashville
- October 23**
Franklin River Fest at 1215 Hillsboro Rd
- December**
REI Gift Wrapping

* Subject to change

ABOUT US

HARPETH CONSERVANCY STAFF



Just like the Beatles, we took this shot crossing the road right in front of our offices. Maybe Jamestown Park will be famous one day. While we are more than a quartet, we like to think that we work in beautiful harmony to protect our rivers and streams, that are unique in the world. Whether making great music or championing clean water, it takes a village to make the work happen, and we are lucky to have a great staff who is always willing to cross the road.

Haylee Waddey Hall, Ryan Jackwood, Frederick Gonzalez, Grace Stranch, Jim Redwine, Jane Polansky, Dorie Bolze, and Angela Bryan.

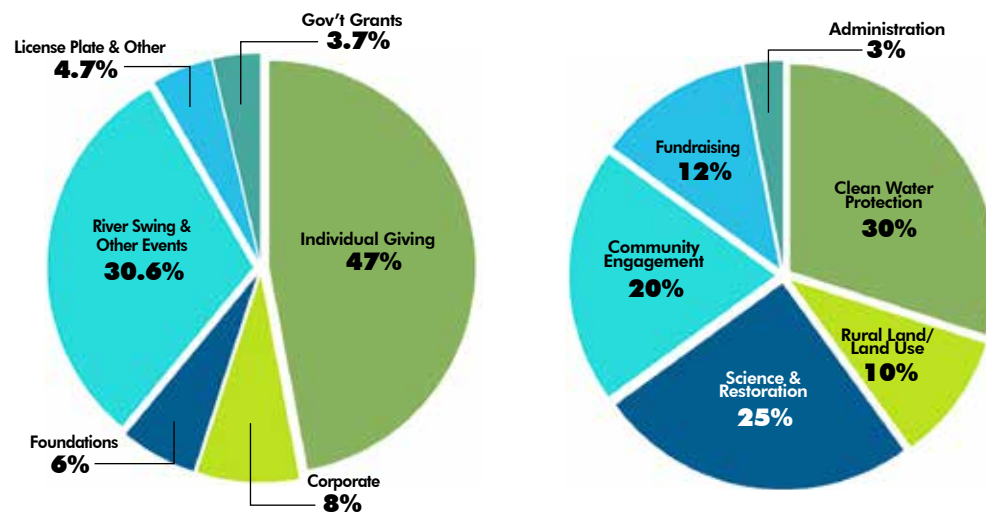
FINANCIAL SUMMARY

Unaudited FY 2021 (FY-March 31, 2022)

INCOME \$890,860

EXPENSES \$785,488

WISH LIST



- ▶ Computer for science modeling (Intel Core i7-10750H @ 2.60GHz, about \$1,500)
- ▶ Meeting space for 20-30 people
- ▶ Sturdy Easels – we REALLY need about 20 or more!
- ▶ Portable PA (Public Address) System for small events speaking and simple entertainment
- ▶ Canoe Trailer
- ▶ Pay back our \$150,000 SBA Loan
- ▶ GoPro
- ▶ Video Equipment – mics, editing equipment, etc.
- ▶ Good digital camera
- ▶ Car Wrap
- ▶ Outdoor Work Gloves
- ▶ Shovels
- ▶ Flip Charts
- ▶ Clip Boards
- ▶ Office Supplies
- ...and we always have other needs if you have spare supplies!

Assets	\$459,650	Cash & other cash assets
	\$38,590	Restricted funds for community groups
	\$498,240	TOTAL
Liabilities	\$53,590	Cash & other cash assets
	\$149,900	SBA loan
	\$203,490	TOTAL
Net Assets	\$294,750	Cash & other cash assets

See our annual audit, 990 tax filings, and other documents at our Giving Matters profile (givingmatters.com).

EVERY DOLLAR IS CRITICAL FOR OUR WORK TO PROTECT CLEAN WATER AND OUR RIVERS IN TENNESSEE! Please start or renew your membership **TODAY**.

ABOUT US

NEW FACES

GRACE STRANCH COO and Vice President of Conservation and Policy



Grace joined the HC team in September 2021. Prior to joining the Conservancy, she practiced law at Branstetter, Stranch & Jennings, PLLC. She has engaged in environmental work across the world and has over 15 years of experience organizing around environmental issues in Tennessee. Based on her significant community involvement, Grace was honored with the 2020 Athena Young Professional Award and Metro Council Resolution RS220-457. As a native Nashvillian, she grew up playing on the Harpeth River and continues to love spending time in nature. Grace received her B.A. in International Studies from Rhodes College and her J.D. from University of Tennessee College of Law.

FREDERICK GONZALEZ Communications & Outreach Manager

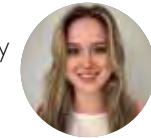


Frederick joined HC in February 2022. Prior to joining the team, he worked as a social media manager and beverage and teams development manager in various specialty coffee shops across Los Angeles. He has organized community events with organizations such as Charity:Water and Coffee Collective Denmark to bring awareness to issues around water access inequities and the impacts of coffee supply chain production. Frederick received his Master of Science in International Relations with Merit from the University of Edinburgh, where he focused on climate policy, sustainable agriculture, and environmental justice. He received his B.A. in Political Science from Azusa Pacific University.

SUMMER 2022 INTERNS

SAVANNA ROBERTS -

Savanna Roberts is currently studying as a 2L at Vanderbilt Law School, where she is pursuing a career in environmental law. She graduated from the University of Louisville with a B.A. in English and a minor in Political Science. During her time at U. of L., she worked as a student intern at the United States Attorney's Office and WDKY. During law school, she researched environmental law and policy issues, volunteered at the Land Trust for Tennessee, and worked as a fellow for the Access to Justice Summer Fellows Program.



CLAIRE THOMPSON -

Nashville native Claire Thompson is a first-year law student attending Vanderbilt University. Following her graduation from Savannah College of Art and Design in 2014, she moved to Seattle, Washington, where she worked as a scientific illustrator and a legal assistant. Claire has spent many summers canoeing and kayaking on the Harpeth River with her parents and siblings. She also is an avid hiker, biker and runner, and she loves spending time in the outdoors. Claire now lives in Bellevue and is very excited to intern with the Harpeth Conservancy and assist in our work.



SEAN RAMEY -

Sean is excited to be an intern at Harpeth Conservancy. He grew up in eastern Nebraska and moved to Flagstaff, Arizona to attend Northern Arizona University. He then received a Master's degree in Medical Microbiology at the University of Westminster in central London, after which he worked as an environmental scientist and environmental monitor in Albuquerque, New Mexico! He started law school at Belmont in August of 2021. Having volunteered at a coffee plantation in Costa Rica and a habitat conservation center north of London, he clearly loves to travel and be active in helping others and the environment.



BEN BRADFORD - Ben is a law student at Vanderbilt University. Originally from Northwest Florida's beautiful beaches, Ben attended the University of Mississippi and received degrees in Southern Studies and Accountancy. While conducting rural land research for a Mississippi law firm, he discovered the power of the law in shaping our environment. Ben plans to pursue a career in land use law and is conducting research in that field for Harpeth Conservancy this summer.



BOARD OF DIRECTORS ADVISORY COUNCIL

Courtney Laginess,
Board Chair
Assistant General Counsel, FIS

Christian Currey,
Vice Chair
Founder, FarmVet

Jared King,
Treasurer
CPA, CFE, CGMA
Senior Manager, Assurance
Services, KraftCPAs PLLC

Kevin Davis
Secretary
Senior Corporate Counsel,
HealthTrust

Chad Bortoff
Director of Construction and
Asset Management, Eakin Partners.

Matt Dobson, V
Dobson Property Tax Consulting

Johnathan Fisher
Founder, Paddle LLC

Layton Meng
Assistant VP of External
Communications,
Jackson National Life Insurance

Drew Powell
Martin & Zeffoss, Inc.

Kimberly K. Sharp
Manager, Retirement &
Compliance, Total Rewards,
Nissan USA

Fernando Silva
Sr. Brand Manager, MARS Petcare

DeeDee Wade
Affiliate Broker,
Fridrich & Clark Realty, LLC

Ben Wheeler
Private Banker and Vice President,
First Horizon Bank

BOARD INTERN
Bryce Cirbo,
Owen School Board Fellow

John Dab
Advisory Council Chair
Senior Counsel,
HealthTrust Purchasing Group

Mike Blosser

Linda Breggin

David Bridgers

Mary Brockman

Mike Corn

Sarah Ford

Patty Ghermer

Joe Glaser

John Guider

Lisa Harless

Nancy Hiatt

John Ingram

Orrin Ingram

Susan Kaestner

Robanne T. Legan

David Lemke

Leslie Liautaud

Emily A. Magid

John Mattox, II

Rachael McCampbell

Dan McEwen

Deborah Miede, Ph.D.

Tom Morales

John Noel

Phil Pace

Jen Ripple

Ginger Shirling

William H. "Chip" Smith

Mary Wade

Darrell Waltrip

RIVER SWING - RAIN LIFTS FOR A RECORD-BREAKING EVENING

After a reimagined year for COVID, **River Swing** was back in full swing. **Co-Chairs Kathryn and Christian Currey**, along with an amazing committee, hosted another **RECORD-BREAKING** year, raising more than **\$250,000** to support our work! At the event, Leslie and Jimmy Liautaud's contribution of **\$100,000** was presented and a challenge was issued for others to give generously. Special thanks to **Lipman Brothers** and **Jack Daniels** for our specialty beverage, the Jack & Ginger Berry Crush; **Puckett's** for a delicious dinner; **Joe Andrews, Ben Cameron, Tom Landstreet, Michael Rixx, Daniel Donato**, and more for stellar entertainment; and the weather for clearing up so everyone could enjoy a magical night under the stars.



Wealth Strategies Partners team and friends at Photo Booth

RIVER SWING BY THE NUMBERS



One truckload of compost matter to keep River Swing zero-waste (thanks Compost Company and EcoProducts)

2021 **FIVE AWARDS** FROM NFOCUS READERS' AWARDS

Best Outdoor Party..... 1st Place
Best Online Auction.....2nd Place
Most FUN Party 3rd Place
Best Entertainment3rd Place
Writer's Choice.....**Best Farm Party**



Kristin and Jermaine Walker and Tracie Walker



Mary Brockman, Grace Stranch, Dan Canale, Hank Brockman, Michelle Smith



PATRON PARTY AT GREEN DOOR GOURMET

A gathering for our Harpeth Protection Society Members and River Swing Sponsors and Table Hosts

RIVER CHAMPION SPONSORS



RIVER DEFENDER SPONSORS



RIVER HERO SPONSORS



EVENT CHAMPIONS



MEDIA SPONSORS



CORPORATE FRIENDS

Anderson Benson | Bradley | CapStar Bank | Carmichael Capital | Catalyst Design Group | Chastain-Skillman | Cumberland Kayak | Cumberland Trust | FirstBank | First Horizon Bank | Fridrich & Clark | Harpeth Search | K&L Gates LLP | KraftCPAs | Louisiana Pacific Corporation | Martin & Zerkoff | McEwen Group Real Estate | Neal & Harwell | Pacific Resources | Patterson Intellectual Property Law | Sherrard Roe Voigt Harbison | Stites & Harbison | Tennessee Equine Hospital | Walker Building Group, LLC | Woodmont Investment Counsel

SAVE THE DATE
RIVER SWING 2022

READY TO KICK UP A GOOD TIME?

SATURDAY, SEPTEMBER 17TH
6:00-10:30 P.M.

FUNDRAISING VOLUNTEER SPOTLIGHT



Christine Setzer, Brian Russell and Heidi Hartman

Shout out to a special volunteer who has brought her magic to our events! For the past five years, **Heidi Hartman** has brought her friends, creativity, and passion for rivers to River Swing, our Dinners IN the Creek, and more. We are SO thankful for her energy and innovation. She, along with friends **Michael Rixx, Brian Russell, Christine Setzer, Regan Ziegler**, and others created the new Brownlee Lounge, and added snacks from **Olivia Olive Oil** last year, as well as bringing cocktail hour entertainment. Heidi performed the heavy lifting for these new additions. Thanks, Heidi, for all that you do for us!

DINNER IN THE CREEK

Rachael McCampbell and **Curtis Stewart** once again co-chaired our Dinner IN the Creek, after a pandemic pause. With the bar on the shoal across the creek, guests literally had to get their feet wet to whet their whistle. After mingling and nibbling on hors d'oeuvres, guests took their seats at the wooden tables and copper chairs set IN the creek for dinner from **BAM! Catering**. Event design by **AmosEvents** and flowers by **Garden Delights Fine Florist** were stunning. Guests were treated to entertainment by **Matt Wynn** and **Emily West** thanks to **Cindy Owen of Given Entertainment**. The setting was ethereal, and the passion for the rivers was palpable as people were truly standing in waters they are supporting.



List includes financial and in-kind donations from 4/1/2021 - 3/31/2022

***\$10,000+**

Andrea Waitt Carlton Family Foundation
Bass Pro Shops
Mr. and Mrs. Stephen Bolze
Brown-Forman Corporation
William and Eugenia Cammack Fund
Carolyn Smith Foundation
Colonial Pipeline
Mr. and Mrs. Christian Currey
Dan and Margaret Maddox Fund
Darrell Waltrip Automotive Group
Harpeth Painting
Mr. and Mrs. John Ingram
Mr. Orrin Ingram, II
Kelly Lynn and Chris Janson
Mr. and Mrs. Jimmy Liataud
Robert Lipman/Lipman Brothers
The Barbara J. Mapp Foundation
Mrs. Mary Wade and
Ms. DeeDee Wade

***\$1,000–\$9,999**

A. Marshall Hospitality Group
Adams and Reese LLP
Altar'd State of Cool Springs
Amaranth Designs LLC
Anderson Benson
Mr. and Mrs. William Andrews
Anonymous (x2)
AquaAter
Mr. and Mrs. James Armstrong
BAM Foods Catering
Bank of America
Mr. and Mrs. Bill Barkley
Susan and Carl Becker
Mr. and Mrs. William Berryman
Blackrock Leather N Rich
Mr. and Mrs. John Bolze
Mr. and Mrs. Ray Bolze
Boyle Investment Company
Bradley
Branstetter, Stranch, and Jennings
Mr. and Mrs. Henry Brockman, Jr.
Mr. and Mrs. Richard Broming
Mr. and Mrs. Martin Brown, Jr.
Mr. and Mrs. Ryan Burton
Mr. and Mrs. Barney Byrd
Dr. and Mrs. Dan Canale
Mr. Philip Canear
Capstar Bank
Carmichael Capital, Inc.
Mrs. Anne Carr
Chastain Skillman
Civil Constructors, LLC
Mr. and Mrs. Phillip Clendenin
Mr. and Mrs. Stan Cobb
Mr. and Mrs. William Coble, II
Mr. and Mrs. Billy Coley
Mr. and Mrs. Philip Collins, Jr.
Mr. and Mrs. M. Thomas Collins
The Community Foundation
of Middle Tennessee
The Consecro Group Inc.
Mr. and Mrs. John Cook
Mr. and Mrs. Tom Crook
Conserva Irrigation of Nashville South
Cumberland Kayak Urban
Adventure Company, LLC
Cumberland Trust
Mr. Case Davis and Ms. Cynthia Kito
Mr. Kevin Davis
The Hon. Karl Dean and
Ms. Delta Anne Davis
Mr. James Delanis
Delek US Holdings, Inc.
Mr. and Mrs. Thomas Deleot, Jr.
Mr. Mark Deutschmann and
Ms. Sherry D. Stewart
Mr. and Mrs. Matthew Dobson, V
Mr. and Mrs. Mark Donnell
Mr. and Mrs. Ben Doubleday
Mr. and Mrs. Charles Elcan
Equitable Trust Company
FarmVet
Mr. and Mrs. Matthew Feiler
FirstBank
First Horizon Foundation

Mr. and Mrs. Tim Ford
Fridrich & Clark Realty, LLC
Sen. and Mrs. Bill Frist
Dr. and Mrs. Robert Frist
Ms. Candyce Glaser
Mr. Joseph Glaser, II
Mr. and Mrs. Greg Goodman
Grasslands Environmental
Green Door Gourmet
Mr. and Mrs. Carl Haley, Jr.
Mr. and Mrs. Currey Hall
Hardaway Construction
Mr. and Mrs. Stephan Harlan
Harpeth Search
Mr. and Mrs. Curtis D. Harris
HCA Healthcare
Mr. Jeffrey Heinze
Mr. and Mrs. J. Roderick Heller, III
Mr. Jason Holleman
Mr. and Mrs. Ephriam Hoover, III
Mr. David Horwath
Emily and Mark Humphreys
Ingram Barge Company
Mr. and Mrs. David Ingram
Mr. and Mrs. Jan Jennings
John Bouchard & Sons Co.
Mr. and Mrs. Jeff Johnson
Mr. and Mrs. Mike Jones
K&L Gates
Mr. and Mrs. Bill King
KraftCPAs PLLC
Mr. Ed Lanquist
Dr. and Mrs. Lou Laratta
Larry Pile Glass
Dr. and Mrs. Harry Legan
Mr. and Mrs. Robert Levine
Ms. Pam Lewis
Mr. and Mrs. Scott Limbaugh
Mr. George Lindemann, Jr.
Louisiana Pacific Corporation
Mr. and Mrs. Andrew Lucyshyn
Ms. Nancy Maclean
Ms. Tommye Maddox
Martin & Zerfoss, Inc.
Ms. Rachael McCampbell and
Mr. Curtis Stewart
McEwen Group, LLC
Dr. and Mrs. Monty McInturff
Mr. and Mrs. Michael McKerley
Mr. and Mrs. Russell Melvin
Mr. Ray Meltvin
Mr. and Mrs. Norman Miede
Mississippi River Network
Mr. and Mrs. Dennis Monroe
Moore, Ingram, Johnson & Steele
Neal and Harwell, PLC
Mr. Vince Neil and Ms. Rain Hannah
Mr. John Noel and
Mrs. Melinda Welton
Mr. and Mrs. Jeffrey Owen
Mr. and Mrs. F. Perry Ozburn
Mr. Phil Pace
Pacific Resources
Patagonia
Mr. and Mrs. Richard Patton
Mr. Rod Pewitt
Phoenix Boats
Mr. and Mrs. Douglas Pugh
Ms. Joan Raskin
Mr. and Mrs. Jim Redwine
Mr. and Mrs. George Renaudin, II
Mr. and Mrs. Glenn Rikard
Mr. and Mrs. Bruce Roberts
Mrs. Delphine Roberts
Mr. and Mrs. Owen Rogers
Mr. and Mrs. Shaun Rowles
Mr. and Mrs. Will Schaeble
Mr. and Mrs. Zulu ScottBarnes
Mr. and Mrs. Larry Sharp
Sherrard Roe Voigt & Harbison, PLC
Mr. and Mrs. Erick Shrauger
Simmons Bank
Dr. and Mrs. Robert Siursen
Mr. and Mrs. Brian Smallwood
Mr. and Mrs. Paul Smith
Dr. Sue Snyder and Mr. Baxter Overton, III
Shirley and Stuart Speyer
Shirley Speyer Family Fund

of The Community
Foundation of Middle Tennessee
Mr. and Mrs. Tom Steele
Stites & Harbison
The Honorable Jane Stranch
and Mr. James Stranch
Ms. Carly Swindell
Tennessee Equine Hospital
Mr. and Mrs. Thomas Thomson
Mr. and Mrs. Wade Thornton
Mr. Brandon Tolman
Mr. and Mrs. George Tomlin
Ms. Laura Anne Turner
UBS-Endeavor Wealth Partners
Mr. and Mrs. John Von Arb
Walker Building Group
Louise B. Wallace Foundation
Waller Iansden Dorch & Davis, LLP
Walton's Antique & Estate Jewelry
Mr. and Mrs. Bill Warfield
Wealth Strategies Partners
Mr. Steven Weiss
Ms. Barbara White
Whole Foods
Kevin Wimpy Portraits & Gardens
Woodmont Investment Counsel
YETI
YogaSix

\$500–\$999

Allegra Marketing Print /Mail -
Nashville
Ms. Judy Alexander
Ms. Lisa Anderson and
Mr. Michael Waldrop
Mr. and Mrs. Stephen Anderson
Mr. and Mrs. Bert Bailey
Kendall Berry Charitable Trust
Tom Black Center for Excellence
Mr. and Mrs. Richard Bracken
Mrs. Nancy Breggin and
Mr. Mike Vandenbergh
Ms. Tracey Bregman
Brooklyn Bowl
Ms. Russanne Buchi-Fotre
Mr. and Mrs. Jason Buck
Mr. and Mrs. Karl Canavan
Mr. Will Cheek, Jr.
Mr. and Mrs. Richard Chatard
The Compost Company, LLC
Mr. George Cox and
Mrs. Lee Ann Cox
Mr. and Mrs. Art Creel
Mr. and Mrs. Steven Crook
Ms. Use Davis
Mr. Mike Delvisco
Ms. Kristin Dingman
Mr. Glenn Dukes
Eco Products
Mr. and Mrs. Tim Evans
Mr. and Mrs. Ross Evans
Ms. Lisa Fallon and Mr. Joe Sweeten
Mr. and Mrs. Michael Firucane
Mr. Todd Fleenor
Mr. and Mrs. Ryan Flury
Mr. and Mrs. Evan Forte
Ms. Dalia Garcia
Garden Delights Fine Florists
Mr. Bruce Gaynor
Mr. and Mrs. John Gifford
Mr. and Mrs. Mark Gilliam
Mr. and Mrs. John Grimm
Gunner Kennels
Ms. Gabrielle Hanson
Mr. and Mrs. Eric Helman
Mr. and Mrs. John Hermann
Mr. and Mrs. James Dean Hicks
Mr. Kent Holdcraft
Mr. Matthew King
Mr. and Mrs. Courtney Laginess
Mr. and Mrs. Tom Landstreet
Mr. and Mrs. Mark Leedham
Mr. and Mrs. Calvin Lehev
Dr. and Mrs. Macrae Linton
Mr. and Mrs. Wilbur Logan
Mr. Drew Lohoff
Mr. and Mrs. David McCracken
Ms. Reba McEntire and Mr. Rex Linn

\$250–\$499

360 Fitness Coaching
Mr. and Mrs. Tom Adkinson
Christian Alford
Mr. and Mrs. George Anderson
Bad Axe
Mr. and Mrs. Gabriel Bassett
Bates Nursery and Garden Center
Mr. Alan Berry
Mr. and Mrs. Robert Black
Mr. Brent Blackburn and
Ms. Annie Ierardi
Mr. and Mrs. Claude Blankenship
Ms. Michelle Boeckmann
Dr. Tanner Boyd
Mr. and Mrs. William Brabson
Mr. and Mrs. William Bradshaw
Brixx Pizza
Broken Paddle Outfitters
Mr. and Mrs. David Bynum
Mr. and Mrs. Wentworth Caldwell, Jr.
Ms. Misty Carson
Ms. Marshall Chapman
Mr. and Mrs. Will Cheek, III
Mr. Nathan Collier
Corky's Brentwood
Mr. and Mrs. Jimmy Craig
Mr. and Mrs. Paul Davis
Dr. and Mrs. Webb Earthman
Dr. and Mrs. Steven Eskind
Eye Med
Mr. and Mrs. Joseph Farrington
Mr. Luis Fernandez and
Ms. Viviana Lavin
Mrs. Lorraine Ferrell
Mr. and Mrs. Max Finkbeiner
Fly South
Foggy Bottom Canoe Rental
Mr. and Mrs. Angelo Formosa, III
Mr. and Mrs. William Gain
Mr. and Mrs. Dodd Galbreath
Gardens of Babylon
Ms. Anne Goetze
Ms. Susan Harlan
Ms. Lisa Harless
Ms. Kristen Hebebrand

Ms. Shannon Helfenberger
Mr. Earl Henry, Jr.
Mr. William Hereford
Mr. and Mrs. Kevin Herrington
Mr. and Mrs. John Hiatt
Mr. David High
Mr. and Mrs. Max Hixon, III
Ms. Margaret Horn
Dr. and Mrs. George Hornberger
Mr. and Mrs. Gary Housley
Mayor and Mrs. James Hunt
Ms. Amy Jackson
Ms. Kay Johnson
Dr. Courtney Kihlberg
Mr. and Mrs. Wendell King
Mr. Kristopher Lange
Mr. and Mrs. Ryan Lee
Leiper's Fork Distillery
Mr. and Mrs. Hill Lenderman
Ms. Emily Magid
Mr. James Mahurin
Ms. Susan Dupont
Chimney Master, LLC
Emmaline
Ensworth High School
Epic Waters Indoor Water Park
The Jane & Richard Eskind
and Family Foundation Inc.
Ms. Wray Estes
Ms. Kristie Feldman
Dr. Sara Figal
Firestone-Brentwood
Mr. and Mrs. Alan Fister
Ms. Gayle Foster
Franklin Antique Mall
Mr. and Mrs. Kent Freeman
Mr. and Mrs. John Gallagher
Mr. and Mrs. Alan Gaus
Mr. and Mrs. Steve Ghertner
Ms. Kristina Gray-Counts
The Copper Fox Gallery
Groove Life Wholesale
Mr. John Guider
Ms. Elaine Hackerman
Mr. and Mrs. Bill Haider
Dr. and Mrs. John Hainsworth
Dr. and Mrs. William Halford
The Harpeth Hotel
Judge Penny Harrington
Mr. Stephen Harris and
Ms. Kathleen Kocher
Mr. and Mrs. Matthew Healy
Ms. Elizabeth Heaston
Mr. and Mrs. Russ Heldman
Mr. and Mrs. John Henderson
Mr. and Mrs. Mike Henderson
Mr. and Mrs. Stuart Hensen
Her Voice Works
Ms. Betsy Hester
Ms. Lauren Hill and
Ms. Jane Polansky
Holiday World
Ms. Elizabeth Holmes
Ms. Sharon Hoover
Hounds Town Smyrna
Mr. and Mrs. William Howell
Friends of Bill Hubbard
Mr. and Mrs. Howard Hunter
Jekyll Island Authority
Mrs. Rudy Jordan
Mr. and Mrs. Brad Kelley
Mr. and Mrs. William Kemle
Kendra Scott
Mr. and Mrs. Jared King
Mr. Gene Koonce
Mr. Paul Kuhn
Mr. and Mrs. Gil Lackey
Mr. and Mrs. Andrew Laughlin
Mr. and Mrs. Scott Layden
Leiper's Fork Distillery
Mr. and Mrs. David Lemke
Mr. Steve Lewis
Mr. Daniel Librero
Ms. Amy Blount
Ms. Laurie Bouchard
Mr. and Mrs. Brant Bousquet
Ms. Rebecca Bowers
Ms. Joanie Bowles
Mr. and Mrs. Robert Brandt

\$100–\$249

360 Bistro
Adele's Nashville
Mr. and Mrs. Kent Agee
Mr. and Mrs. Kevin Albrecht
Alcatraz East Crime Museum
Mr. and Mrs. Newton P Allen, Jr.
Mr. Charles Alley
American River Stokers Foundation
Ms. Susan Andrew
Mr. and Mrs. N.A.C. Andrews, Jr.
Mr. and Mrs. James Armistead
AT&T Services, Inc.
Ms. Elizabeth Bahr
Ms. Gina Bashour
Mr. and Mrs. E. Warner Bass
Mr. and Mrs. Douglas Berry
Ms. Jennifer Beugelmans
Ms. Amy Blount
Ms. Laurie Bouchard
Mr. and Mrs. Brant Bousquet
Ms. Rebecca Bowers
Ms. Joanie Bowles
Mr. and Mrs. Robert Brandt

Ms. Angela Bryan
Mr. and Mrs. Porter Calhoun
Mr. James Callaway
Ms. Elizabeth Callicott and
Mr. Dean Bose
Churchill Downs
H. Clark Distillery
Ms. Hannah Clements
Club Pilates
Mr. Gilmore Connors and
Ms. Anna Lee Rhea
Mr. and Mrs. Tracy Cothran
Cork & Cow
Ms. Amanda Counts-Payne
Mr. and Mrs. Richard Courtney
Cumberland Transit
Mr. and Mrs. John Dab
Ms. Elizabeth Dachowski
Mr. and Mrs. Michael Parrott
The Pasta Shoppe
Perennial Plant Society
of Middle Tennessee
Perfect Setting Gift Shop
Ms. Renee Pinto
Private Edition
Props Antiques
Raffing In The Smokies
Mr. and Mrs. Robert Rice
Ms. Linda Roach
Mr. Toni Rodgers
Mr. and Mrs. Bill Rodgers
Mr. and Mrs. James Rodkey
Mr. Brian Russell
Mr. George Seifers, III
Mr. and Mrs. Joseph Shank
Shep's Deli
Mr. Michael Sheridan
Ms. Kim Simpson
Mr. and Mrs. Wilson Sims, Jr.
Mr. and Mrs. Ryan Sitzler
The Snooty Fox
Something Inked
Ms. Mara Sommers
Mr. Even Stevens
Mr. Gerard Stranch
Ms. Ryoko Suzuki
Sweetens Cover Golf Club and
Sweetens Cove Spirits
Mr. and Mrs. Matt Taylor
Mr. and Mrs. Thomas Taylor, Jr.
Mr. and Mrs. Clark Tidwell
Ms. Pam Tillis
Mr. and Mrs. Tim Towers
Mr. Charles Trabue, III and
Ms. Jane Vandeventer
Tractor Supply
TriGreen Equipment
Turkish Ts
Urban Fitness
Ms. Barbara Vandenbergh
Mr. and Mrs. William Vaughan, III
Mr. Ted Walker
Mr. Matthew Weinger and Ms. Lisa
Kline Price
Ms. Jennifer Weithman
Mr. and Mrs. Peter Westerholm
Ms. Ashley Whitney and
Mr. Joseph Conrad
Mrs. Margo Wilding
Mr. and Mrs. Ian Wolczyk
Mr. and Mrs. Richard Wooten
Mr. Leonard Wright
Mr. and Mrs. Frank Wylie, III
Mr. and Mrs. Adam Yeomans
Mr. Mark Yost
Mr. and Mrs. John Young

Mr. and Mrs. Dan McEwen
Ms. Anna Means
Ms. Melanie Miller
Mr. and Mrs. Mark Miller-McLemore
Mr. and Mrs. John Minton
Ms. Christine Modisher and
Ms. Marsha Williams
Mao Country
Mr. Mark Moorberg
Nantahala Outdoor Center
Nashville Craft Distillery
Nashville Pilates Company
Nashville Zoo
Natchez Stone
Mr. and Mrs. Chuck Neese
Mr. and Mrs. Judson Newbern
Mr. Ben Bleyer
Ms. Dorie Bolze
Mr. and Mrs. Maurice Bondurant
Mr. David Bordenkircher
Ms. Minda Brackman
Mr. and Mrs. Michael Bressman
Bronca
Ms. Laura Brown
Mr. Damon Byrd
Cabot Cheese
Mr. and Mrs. James Caldwell, III
Mr. Jeff Callahan
Ms. Michelle Campbell
Mr. Craig Canan
Mr. and Mrs. Patrick Carroll
Mr. and Mrs. Billy Carter, Jr.
Ms. Rachel Carter
Mr. John Michael Cassidy
Mr. and Mrs. William Caywood
Mr. and Mrs. Mark Chalos
Ms. Ruth-Decker Chaney
Chattanooga Whiskey
Experimental Distillery
Cheekwood Botanical Gardens
Ms. Karen Clark
Mr. Will Clayton
Mr. Thomas Clepper
Mr. James Cole
Mr. and Mrs. Corey Coleman
Mr. Burr Collier
Mr. and Mrs. Terry Cook
Mr. Chaz Corzine
Creekside Trading Company
Ms. Suzette Crutchfield
Mr. and Mrs. Joe Curry
Ms. Emily Curtis
CycleBar Franklin
Ms. Adell Daly
Mr. and Mrs. David Darst
Mr. and Mrs. Thomas Davis
Mr. and Mrs. Bobby Deal
Ms. Patricia Dishman
Mr. Gabe Dixon
Dover Saddlery
Mr. Dylan Duke
Mr. and Mrs. Keith Duke
Ms. Sheila Duke
Mr. and Mrs. Jase DuRard
National Corvette Museum
Ms. Linda Emnian Dyer
Ms. Amy Enix
Ms. Ann Ercelawn
Mr. and Mrs. Matt Farmer
Cedar Hill Homestead
Mr. and Mrs. Johnathan Fisher
Mr. and Mrs. Brian Fleming
Ms. Lisa Foote
Mr. and Mrs. Christy Foreman
Kelley Frank and Ryan Gram
Mr. and Mrs. John Fraser
Friendly Arctic Marketplace
Mr. and Mrs. Joseph Fuisz
Ms. Barbara Futter
Ms. Maureen Gannon
Mr. Kenneth Garner
Ms. Freda Garrett
Ms. Taylor Giamundo
Ms. Allison Glenn
Goodr, LLC

Mr. Martin Akin
Ms. Laura Alabed-Olsson
Dr. and Mrs. Robert Alford
Ms. Jennifer Anderson
Anokesta
Anderson Design Studio
Mr. Davis Anderton
Ms. Amy Angelo
Answer Restaurant
Mr. Phil Armor
Arrington Vineyards
Mr. Jerry Atnip
Mr. and Mrs. Clifford Ball
Mr. and Mrs. Nicholas Barberic
Ms. Sarah Benjamin
Mr. Ben Bleyer
Ms. Dorie Bolze
Mr. and Mrs. Maurice Bondurant
Mr. David Bordenkircher
Ms. Minda Brackman
Mr. and Mrs. Michael Bressman
Bronca
Ms. Laura Brown
Mr. Damon Byrd
Cabot Cheese
Mr. and Mrs. James Caldwell, III
Mr. Jeff Callahan
Ms. Michelle Campbell
Mr. Craig Canan
Mr. and Mrs. Patrick Carroll
Mr. and Mrs. Billy Carter, Jr.
Ms. Rachel Carter
Mr. John Michael Cassidy
Mr. and Mrs. William Caywood
Mr. and Mrs. Mark Chalos
Ms. Ruth-Decker Chaney
Chattanooga Whiskey
Experimental Distillery
Cheekwood Botanical Gardens
Ms. Karen Clark
Mr. Will Clayton
Mr. Thomas Clepper
Mr. James Cole
Mr. and Mrs. Corey Coleman
Mr. Burr Collier
Mr. and Mrs. Terry Cook
Mr. Chaz Corzine
Creekside Trading Company
Ms. Suzette Crutchfield
Mr. and Mrs. Joe Curry
Ms. Emily Curtis
CycleBar Franklin
Ms. Adell Daly
Mr. and Mrs. David Darst
Mr. and Mrs. Thomas Davis
Mr. and Mrs. Bobby Deal
Ms. Patricia Dishman
Mr. Gabe Dixon
Dover Saddlery
Mr. Dylan Duke
Mr. and Mrs. Keith Duke
Ms. Sheila Duke
Mr. and Mrs. Jase DuRard
National Corvette Museum
Ms. Linda Emnian Dyer
Ms. Amy Enix
Ms. Ann Ercelawn
Mr. and Mrs. Matt Farmer
Cedar Hill Homestead
Mr. and Mrs. Johnathan Fisher
Mr. and Mrs. Brian Fleming
Ms. Lisa Foote
Mr. and Mrs. Christy Foreman
Kelley Frank and Ryan Gram
Mr. and Mrs. John Fraser
Friendly Arctic Marketplace
Mr. and Mrs. Joseph Fuisz
Ms. Barbara Futter
Ms. Maureen Gannon
Mr. Kenneth Garner
Ms. Freda Garrett
Ms. Taylor Giamundo
Ms. Allison Glenn
Goodr, LLC

Ms. Jill Gravatte
Mr. and Mrs. Rusty Greer
H. Audrey
Mr. Jim Habacker
Mr. Steve Habacker
Hampshire Realty Advisors, LLC
Ms. Sheryl Handley
Hathorne
Mr. and Mrs. Connor Haugh
Ms. Kathie Heimerdinger
Ms. Mary Hiatt Sexson
Mr. Munro Hixon
Mr. and Mrs. Bill Hoos
Ms. Lydia Horton
Ms. Gloria Houghland
Mr. Don Hudson
Mr. William Huse
Ivey Cakes
Jackalope Brewing
Mr. Charlie Jacobs
Jeni's Splendid Ice Cream
Johnnie Q
Mr. and Mrs. Benjamin Johnson
Mr. David Jones
Ms. Julia Jorgensen
Ms. Chelsea Karle
Mr. and Mrs. Mike Keller
Kentucky Horse Park
Ms. Beth Kindig
Mr. and Mrs. Howard Lamar, III
Lane Motor Museum
Mr. Stephen Langan
Ms. Lynne Lapiere
Mr. and Mrs. Brian Law
Ms. Debbie Layman
Mr. and Mrs. Eric Lewis
Mr. and Mrs. Ronald Ligon
Ms. Laraine Lippolis
Ms. Rachael Lipsey
Mr. Joe Littleton
Local Taco
Ms. Jane Lorenzini
Lou Malnati's Pizzeria
Climb Nashville
Mr. Donald Main
Ms. Cynthia Manley
Maple Street Biscuit
Ms. Janna Maples
Mr. Chad Martin
Ms. Alicia Mattice
Mr. and Mrs. Albert McAulay
Ms. Mable McCrary
Mr. Matt McGraw
Mr. Steven McLellan
Ms. Becky Meagher
Merridee's Breadbasket
Mr. and Mrs. Robert Miller
Robin Mitchell
Mr. and Mrs. Tom Moon
Ms. Gwendolyn Moore
Mr. and Mrs. Pete Murphy
Mr. Joshua Murphy
NASCAR SpeedPark-Smoky Mountains
Nashville Trunk & Bag
Nothing Bundt Cakes
Ms. Debbie Owens
Paddle Up
Ms. Anne Paine
Mr. and Mrs. Robert Parvini, Jr.
Park 'N Fly
Mr. and Mrs. Greg Parker
Mr. Bob Parrish and Ms. Sandy Bivens
Ms. Jordan Perkins
Sabrina and Josh Peterson
Tommy Pinkston
Mr. and Mrs. Sherwood Powers
Ms. Susan Primm
Mr. Jeff Pritchett
Project 615
Puckett's Grocery & Restaurant
in Leiper's Fork
Puffy Muffin
Ms. Jessica Robb
Mr. and Mrs. Christopher Rand

Ms. Stacy Rector
Ms. Lydia Reed
Mr. and Mrs. Travis Reynolds
Mr. Aaron Rhodes
Ms. Julie Richard
Mr. and Mrs. Robert Rippy
Ms. Ashley Roberts
Ms. Tabitha Robinson
Ms. Lynnissee Roehrich-Patrick
Mr. Thomas Rogers
Mr. JB Ruhl and Ms. Lisa LeMaster
Ms. Julie Russell
Mr. and Mrs. Michael Ryan
Ryman Auditorium
Ms. Illyse Sauer
Mr. Diane Scher
Ms. Stef Schmitt
Ms. Tina Shaheen
Mr. and Mrs. Rex Shirling
Ms. Elizabeth Sitgreaves
Mr. Daniel Smith
Mr. and Mrs. Michael Smith
Mr. Tyler Smith
Ms. Becky Smith
Ms. Eleanor Snyder
Soberdough
St. Croix Rod Company
Ms. Amy Starr
Ms. Angelique Stearns
Ms. Heather Steel
Rep. and Mrs. Mike Stewart
Mr. Stephen Langan
Ms. Lauren Stranch
Ms. Cynthia Strong
Mr. Blake Stuck
Mr. and Mrs. John Sullivan
Ms. Angelina Swain
Mr. and Mrs. Clay Taylor
Tazikis
Tennessee Titans
The Crag
The Fresh Market
The Island
Mrs. Linda Themm
Tiny Donuts
Ms. Susan Tirrill
Trace Bikes
Ms. Deborah Trimble
Mr. Ken Tucker
Turnip Truck
Abi and Nathaniel Tylor
Mr. and Mrs. David Vandenbergh
Mr. and Ms. Phil Venable
Mr. and Mrs. John Voigt
Mr. Gregory Wade
Mr. and Mrs. David Wall
Mr. and Mrs. Tim Wallace
Ms. Kristina Walters
Mr. Glen Wanner and
Ms. Elizabeth Ann Richards
Mr. and Mrs. Edward Wansing
Mr. Nick Warndorf
Mr. Greg Wathen
Mr. Gregory Weaver and
Mrs. Paula Phelps-Weaver
Mr. and Mrs. Ron Webber
Mr. and Mrs. Martin Welch
White's Mercantile
Ms. Cindy Whitt
Ms. Fran Wiedeman
Ms. Candace Wilken
Mr. Wade Williams
Williamson Medical Center
Mr. and Mrs. Glen Wilson
Wines in the Fork
Ms. Celia Woldt
WonderWorks Pigeon Forge
Woodland Wine Merchant
World of Coca-Cola
Yarrow Acres
Ms. Christina Zabel-Poulter
Ms. Vanessa Zapata
Mr. Andy Zimmerman
Zoo Knoxville

*Donors \$1,000+ annually are members of our Harpeth Protection Society

GET SOCIAL WITH US!



WHAT'S INSIDE

- ▶ Brownland Farm Proposal Denied
- ▶ McCrory Lane Quarry Bill Stopped
- ▶ *E. coli* Study Updates
- ▶ Volunteers Restoring Waterways
- ▶ Flooding is a Major Concern
- ▶ ...and much more!



BASSPRO - Baseball hat autographed by **Chris Janson** raised more than **\$43,000!** This limited-edition hat is still available.



CUMBERLAND KAYAK

Sunset Tour on and for our rivers!

Last year's sunset float was on the Cumberland River for a great view of the Nashville Skyline. **SAVE THE DATE** for our Sunset Tour on the Harpeth River on **June 23rd at 5:30 p.m.**

(Date and time subject to change.)

LEAVE A LEGACY

*Please request our new **PLANNED GIVING GUIDE** to ensure clean water and healthy waterways in Tennessee for generations to come.*

GET YOUR PLATE!



DON'T BE BLUE - GO GREEN!

Since everyone needs a new plate this year ...make it a **river plate!** Update your plate when you renew this year! This specialty license plate supports our efforts to protect clean water and healthy rivers in Tennessee. Available at your County Clerk's office!

Stay Cool

this summer with HC merch! Shop online for cool merch like SPF long sleeve shirts, Camelbak® water bottles, and more!



OTHERS WHO HOSTED FUNDRAISERS FOR US! THANK YOU!



ALTAR'D STATE

stand out. for good

Almost **\$10,000** raised from Mission Mondays